



800X1600MM  
600X1200MM  
600X600MM

*THE GLAMOROUS  
SURFACE BEAUTY*

full  
body tiles

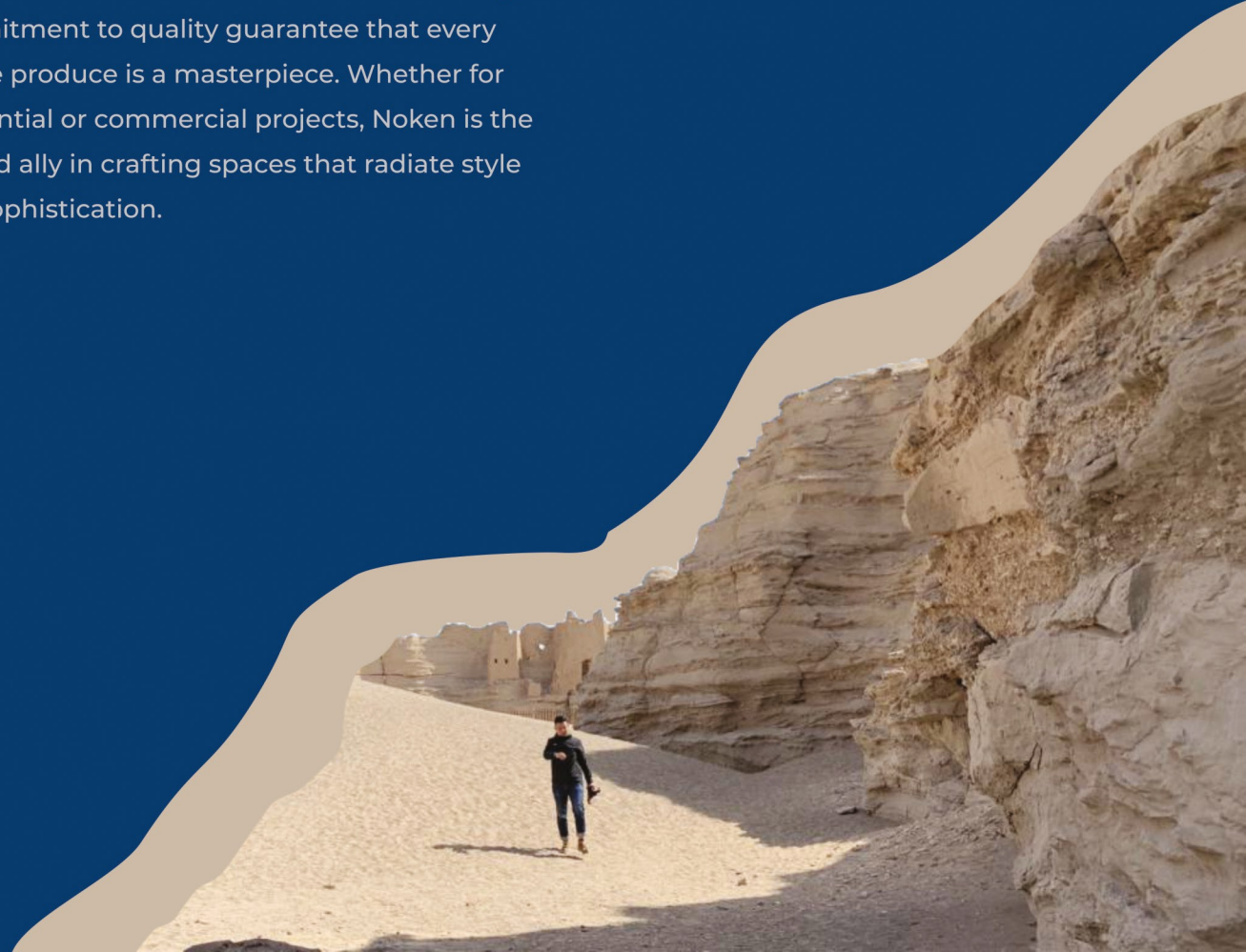
# Noken's Exquisite Tile Collections



Noken - Timeless craftsmanship and innovative design for exquisite spaces. Our wide range of inspiring tiles elevates interiors. Quality and attention to detail make each tile a work of art. Trust Noken to transform your space with style and sophistication.

Emplane the Noken Tiles journey: passion, innovation, excellence. From humble beginnings to industry prominence, our growth and dedication shine. With a commitment to quality, craftsmanship, and customer satisfaction, we transform spaces into stunning works of art. Join us and discover the Noken Tiles difference.

Noken is a renowned tile company that harmonizes timeless craftsmanship and innovative design. We specialize in creating exceptional spaces, offering a diverse range of tiles that ignite creativity and enhance interiors. Meticulous attention to detail and unwavering commitment to quality guarantee that every tile we produce is a masterpiece. Whether for residential or commercial projects, Noken is the trusted ally in crafting spaces that radiate style and sophistication.

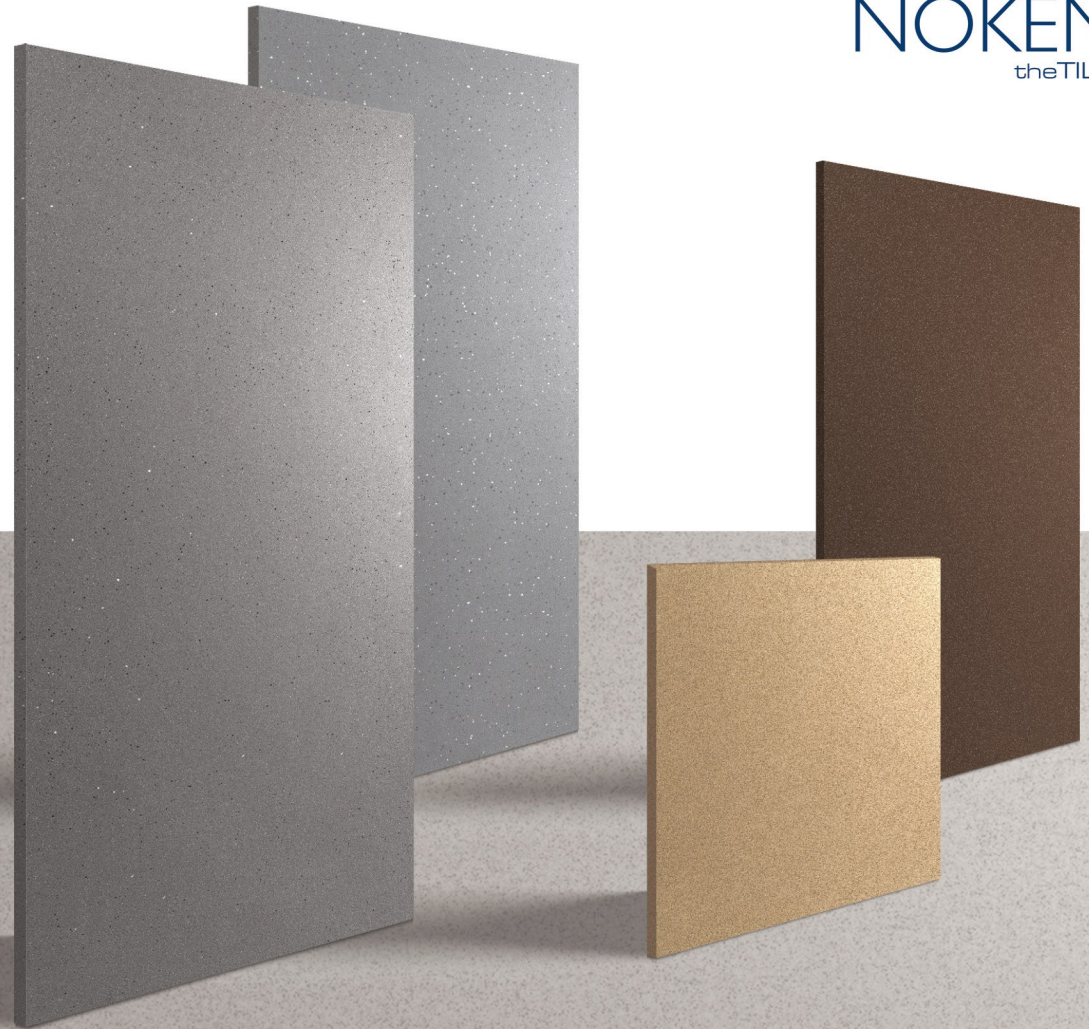




# Magnificent Surfaces With Multiple Options



Choose from 3 sizes and a stunning selection of polished, matt, and punch finishes. We offer a range of exquisite designs in beautiful colors to create a truly unique look.



3

## SIZE

800X1600MM  
600X1200MM  
600X600MM

3

## FINISH

POLISHED  
MATT  
PUNCH

[www.nokenvitrified.in](http://www.nokenvitrified.in)



Public Park and  
Garden



Terraces and  
Balconies



Driveways and  
Pathways



Swimming Pools and  
Surrounding Areas



Beach  
Resorts



High-traffic  
Industrial Areas



# Surface Engineered For Durability



Scratch  
Proof

Experience timeless beauty with our scratch-proof tiles, boasting unrivaled durability. Transform spaces effortlessly while ensuring long-lasting beauty and resilience.

**full  
body tiles**







full  
body tiles

## The highly durable and Long lasting



Highly  
Durable

Full body tiles boast exceptional durability and longevity, ensuring enduring beauty for spaces. Their solid composition ensures resistance to wear and tear over time.



## Secure With Grip And Stability



Non-slip  
Surface

Experience peace of mind with our non-slip surface tiles, combining style and safety for a secure and stylish flooring solution.



**full  
body tiles**



# Shielding Surfaces From Harmful Bacteria

full  
body tiles



Antibacterial  
Surface

Introducing our antibacterial surface tiles,  
ensuring a hygienic environment with innovative  
protection against harmful bacteria and germs.







**800X1600MM**  
POLISHED



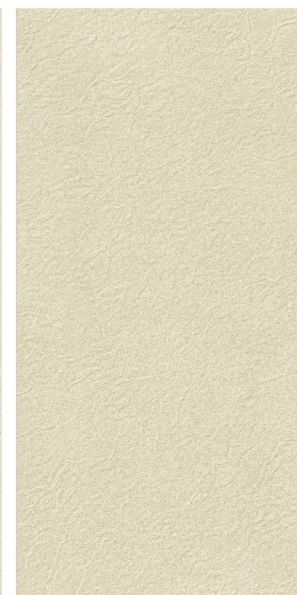
**800X1600MM**  
MATT



**600X1200MM**  
POLISHED



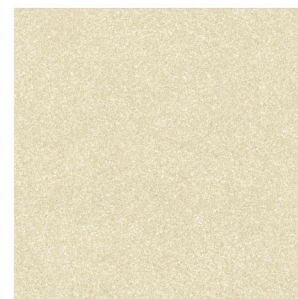
**600X1200MM**  
MATT



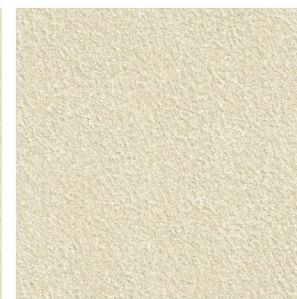
**600X1200MM**  
PUNCH



**600X600MM**  
POLISHED



**600X600MM**  
MATT



**600X600MM**  
PUNCH

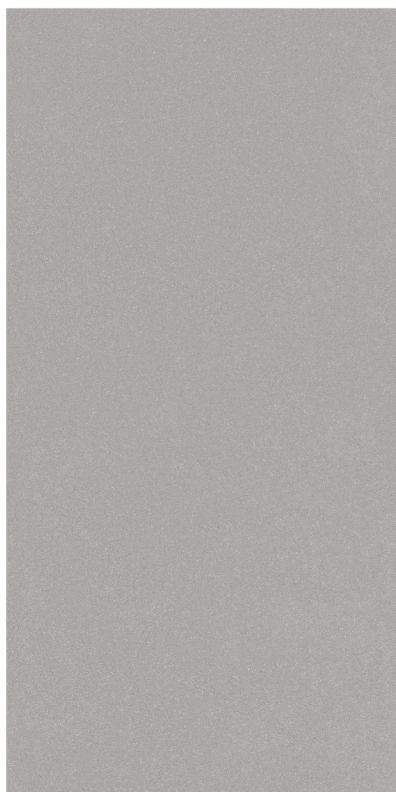








**800X1600MM**  
POLISHED



**800X1600MM**  
MATT



**600X1200MM**  
POLISHED



**600X1200MM**  
MATT



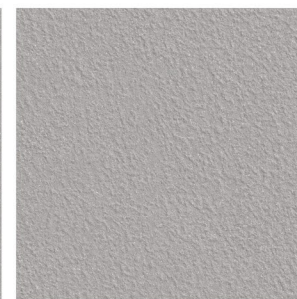
**600X1200MM**  
PUNCH



**600X600MM**  
POLISHED



**600X600MM**  
MATT



**600X600MM**  
PUNCH





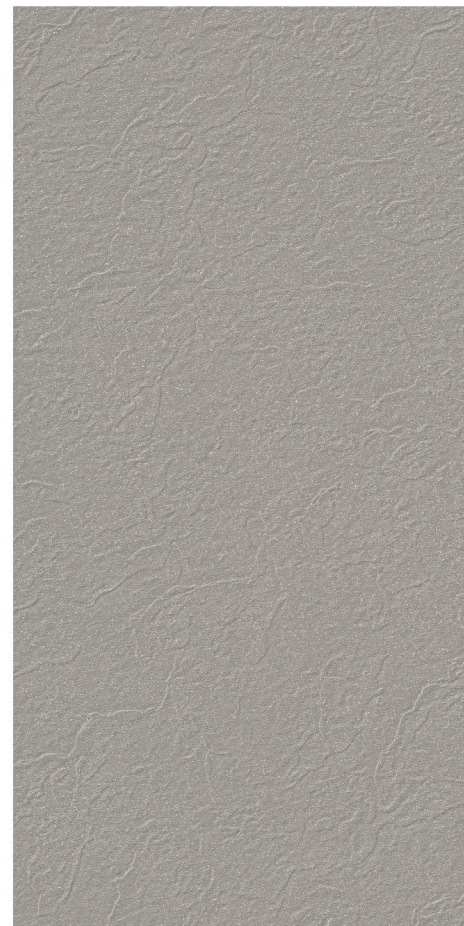




**600X1200MM**  
POLISHED



**600X1200MM**  
MATT



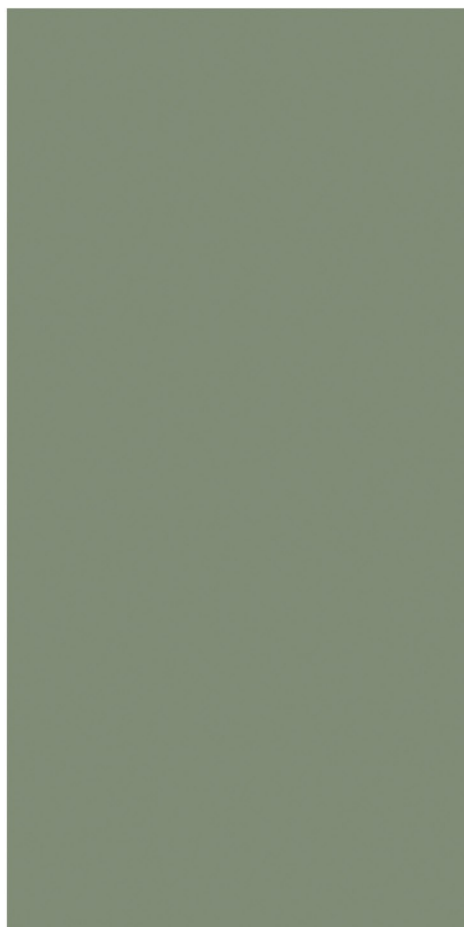
**600X1200MM**  
PUNCH











**800X1600MM**  
MATT



**600X1200MM**  
POLISHED



**600X1200MM**  
MATT



**600X1200MM**  
PUNCH



**600X600MM**  
POLISHED



**600X600MM**  
MATT

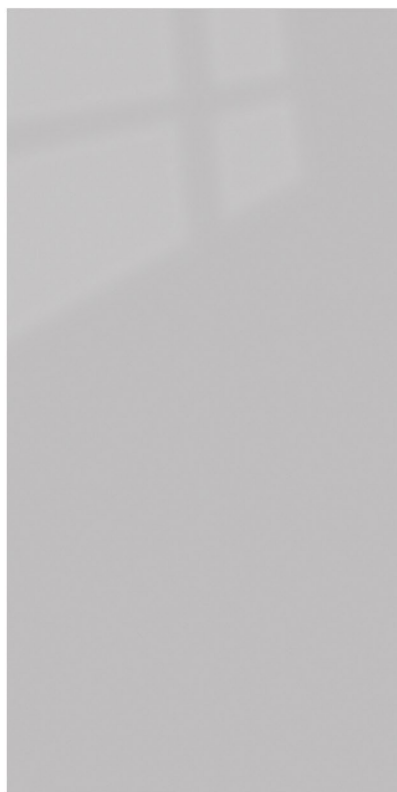


**600X600MM**  
PUNCH

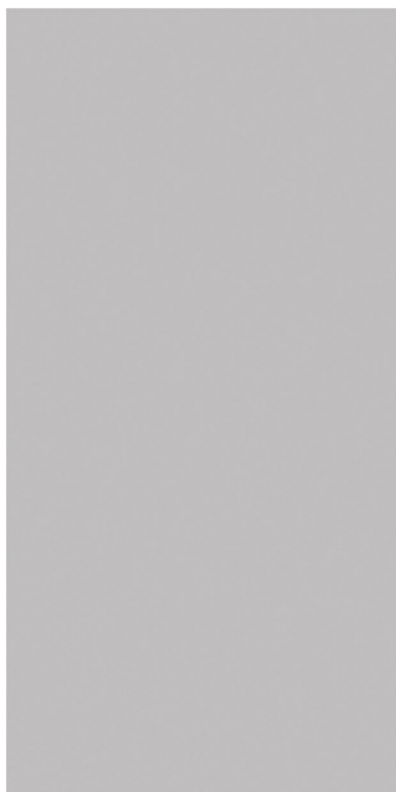




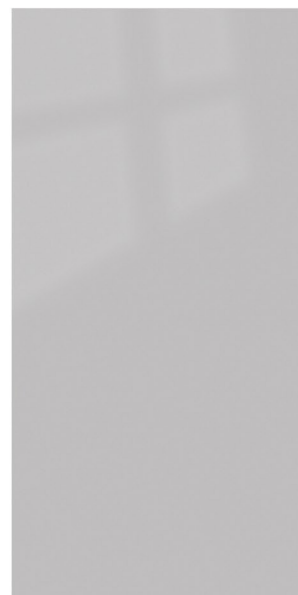




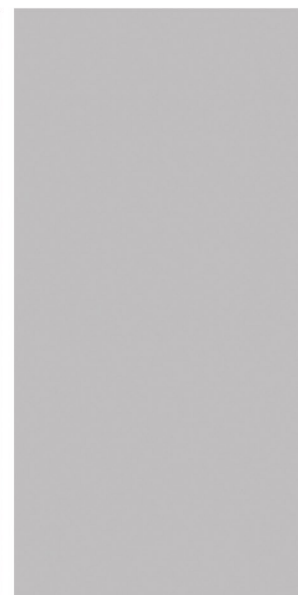
**800X1600MM**  
POLISHED



**800X1600MM**  
MATT



**600X1200MM**  
POLISHED



**600X1200MM**  
MATT



**600X600MM**  
POLISHED



**600X600MM**  
MATT







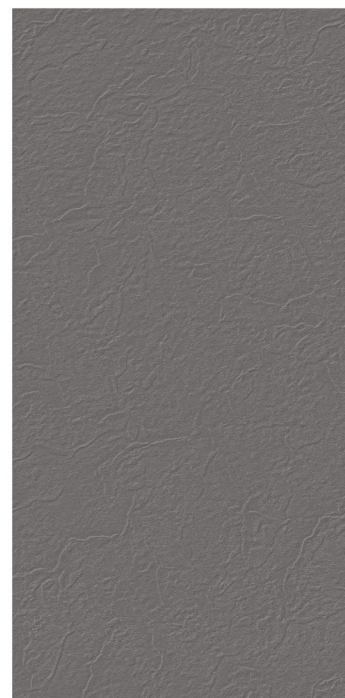




**800X1600MM**  
MATT



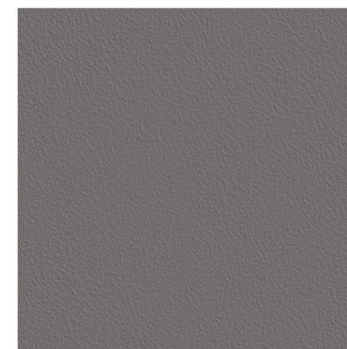
**600X1200MM**  
MATT



**600X1200MM**  
PUNCH



**600X600MM**  
MATT



**600X600MM**  
PUNCH



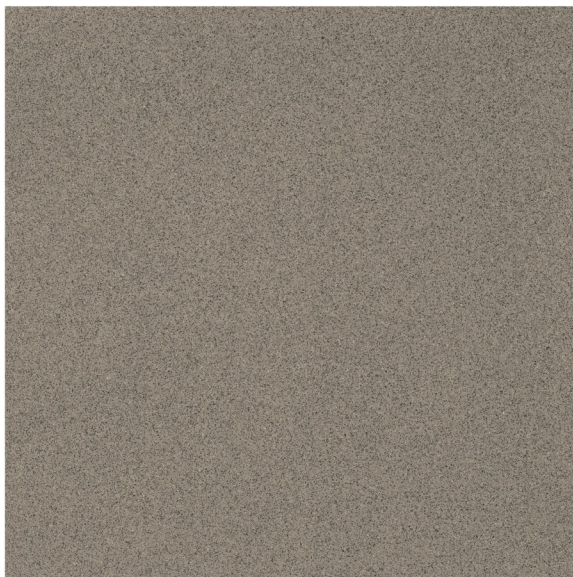








**600X600MM**  
POLISHED



**600X600MM**  
MATT



**600X600MM**  
PUNCH



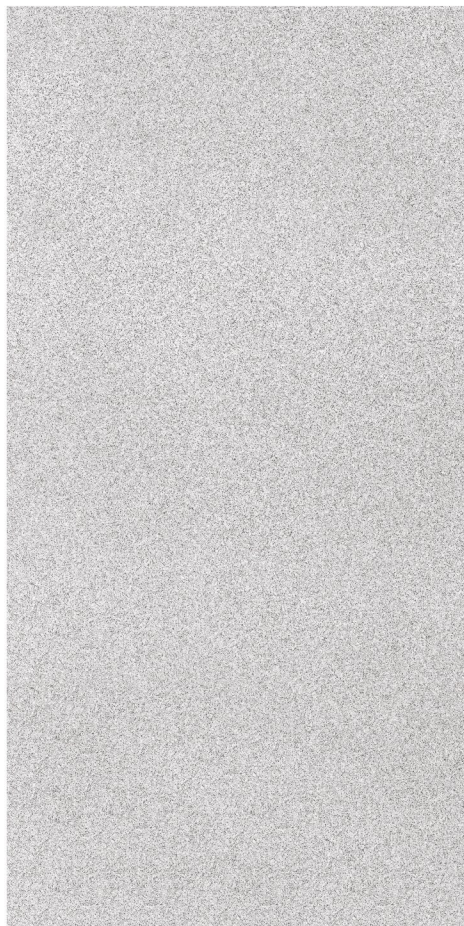




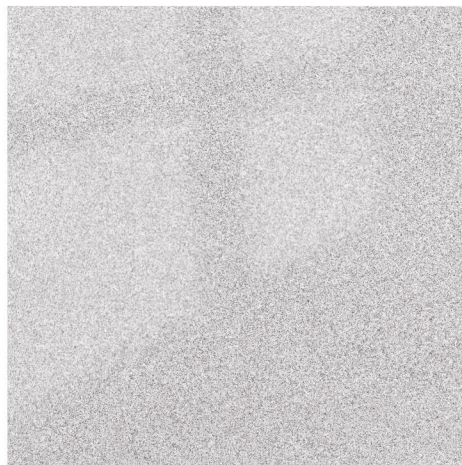
  
**NOKEN**<sup>TM</sup>  
theTILE

**MUD**  
600X600MM · MATT





**600X1200MM**  
MATT



**600X600MM**  
POLISHED



**600X600MM**  
MATT









**600X1200MM**  
POLISHED



**600X1200MM**  
MATT



**600X600MM**  
POLISHED



**600X600MM**  
MATT









**600X1200MM**  
POLISHED



**600X1200MM**  
MATT



**600X600MM**  
POLISHED



**600X600MM**  
MATT





*Stella  
Boutique*

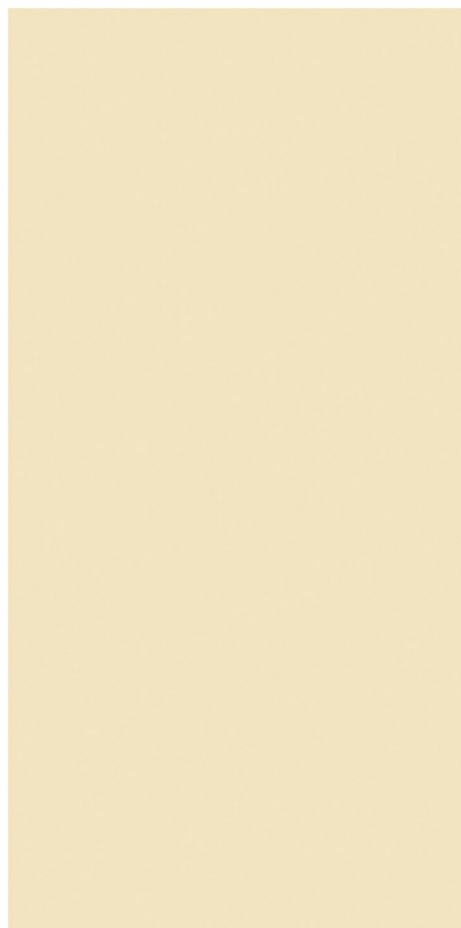
  
**NOKEN**<sup>™</sup>  
theTILE

**DESERT**  
600X600MM • MATT





**600X1200MM**  
POLISHED



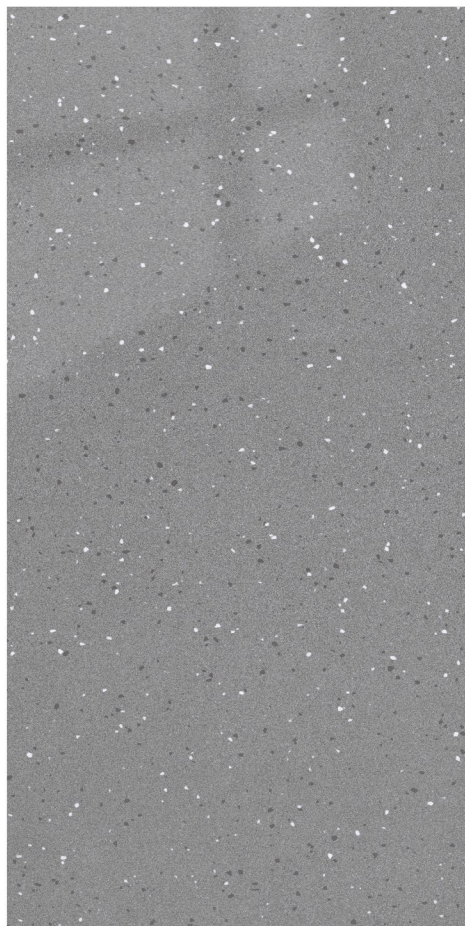
**600X1200MM**  
MATT



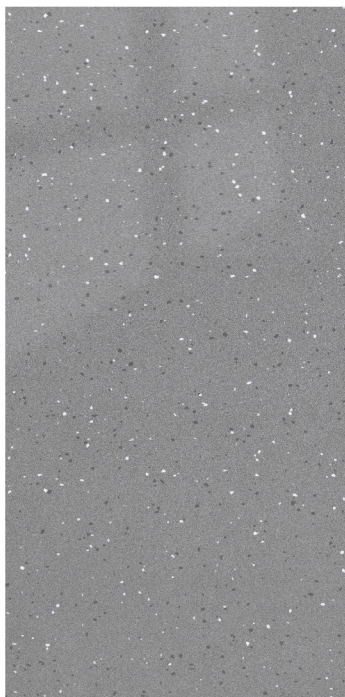




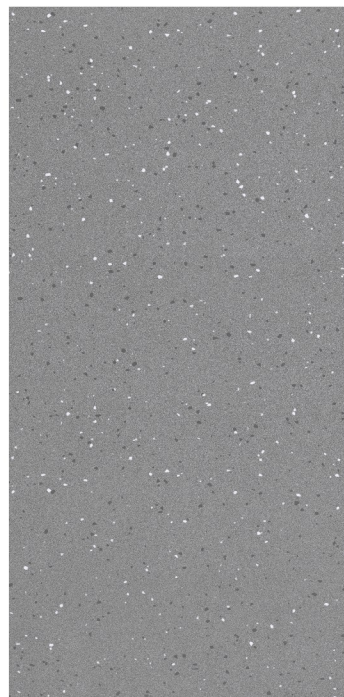




**800X1600MM**  
POLISHED



**600X1200MM**  
POLISHED



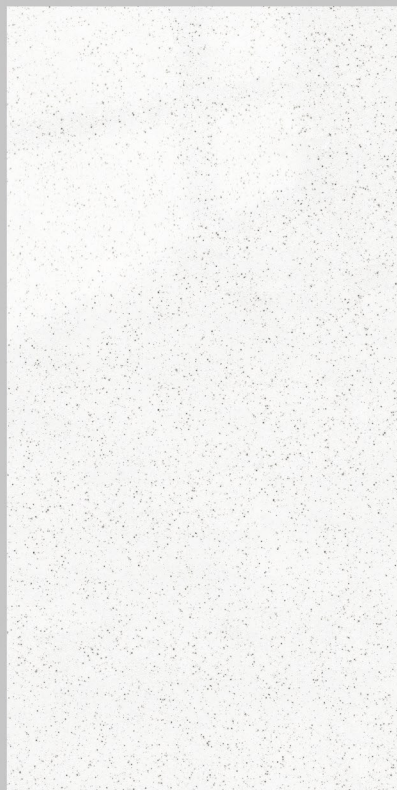
**600X1200MM**  
MATT



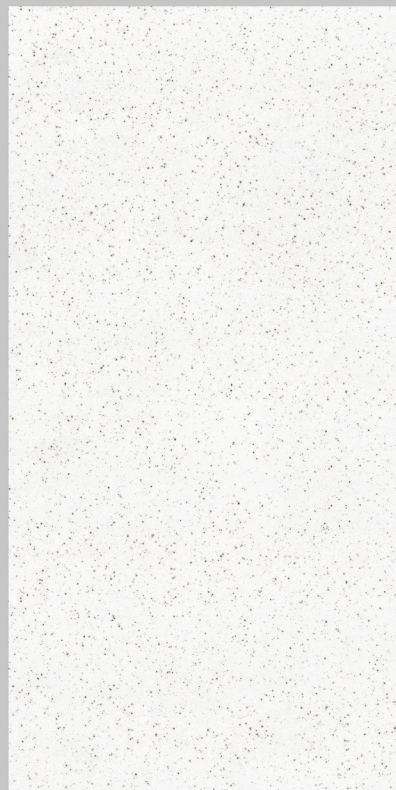




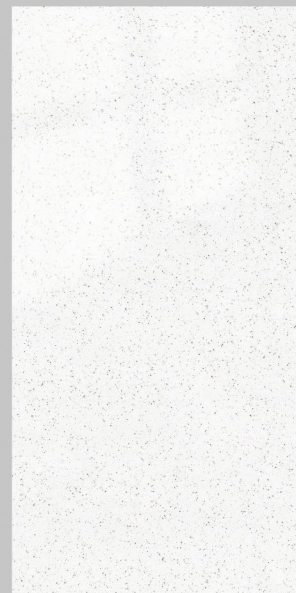




**800X1600MM**  
POLISHED



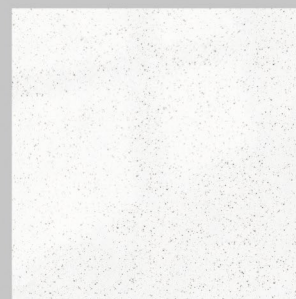
**800X1600MM**  
MATT



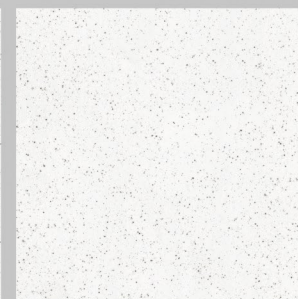
**600X1200MM**  
POLISHED



**600X1200MM**  
MATT



**600X600MM**  
POLISHED



**600X600MM**  
MATT











**NOKEN**<sup>™</sup>  
theTILE

**MOON STONE WHITE**  
800X1600MM • MATT

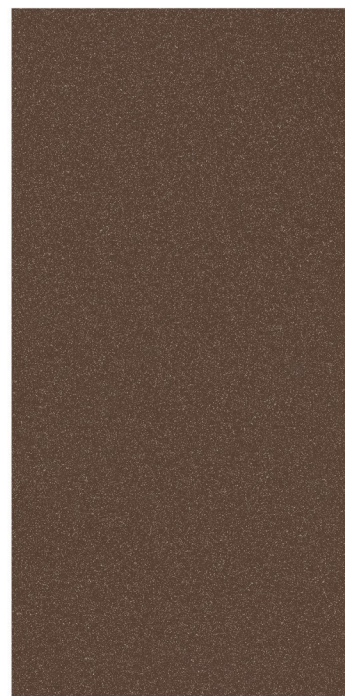




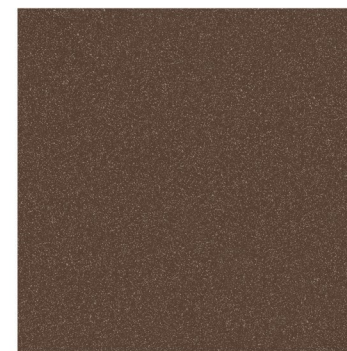
**800X1600MM**  
MATT



**600X1200MM**  
POLISHED



**600X1200MM**  
MATT



**600X600MM**  
MATT









**800X1600MM**  
MATT



**600X1200MM**  
MATT



**600X1200MM**  
PUNCH



**600X600MM**  
MATT



**600X600MM**  
PUNCH

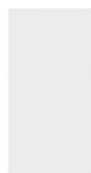








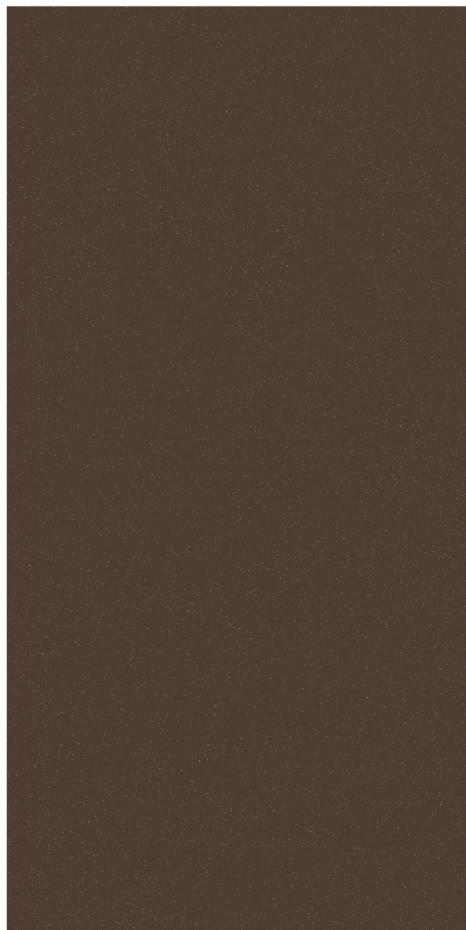
**800X1600MM**  
MATT











**600X1200MM**  
MATT











**600X600MM**  
POLISHED



**600X600MM**  
MATT

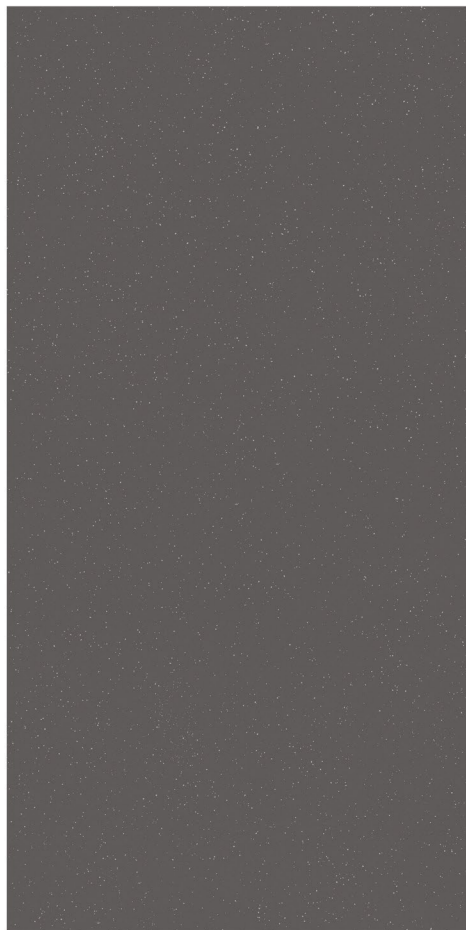


**600X600MM**  
PUNCH

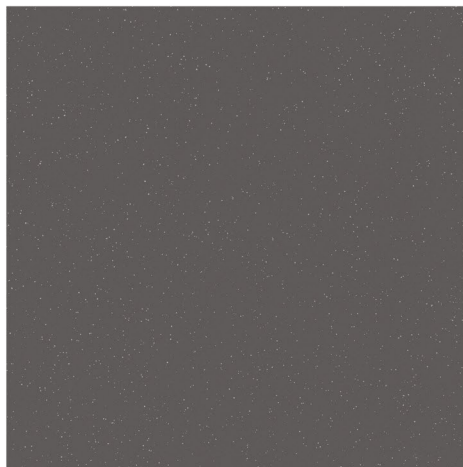








**600X1200MM**  
MATT



**600X600MM**  
MATT





  
**NOKEN**<sup>™</sup>  
theTILE

**METAL**  
600X1200MM • MATT





**600X1200MM**  
POLISHED



**600X1200MM**  
MATT











**600X1200MM**  
POLISHED



**600X1200MM**  
MATT



**600X600MM**  
POLISHED



**600X600MM**  
MATT









**600X1200MM**  
POLISHED



**600X1200MM**  
MATT



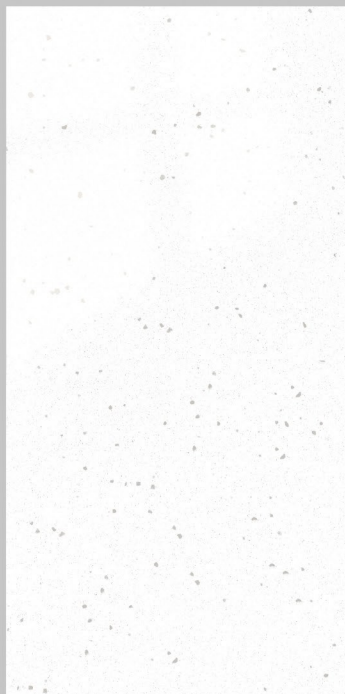








**800X1600MM**  
POLISHED



**600X1200MM**  
POLISHED



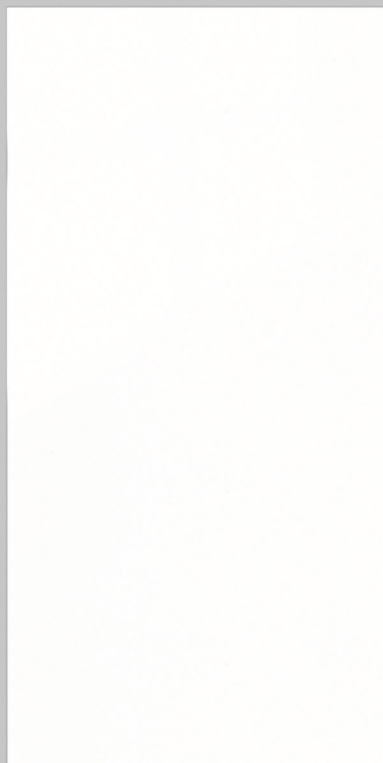
**600X1200MM**  
MATT



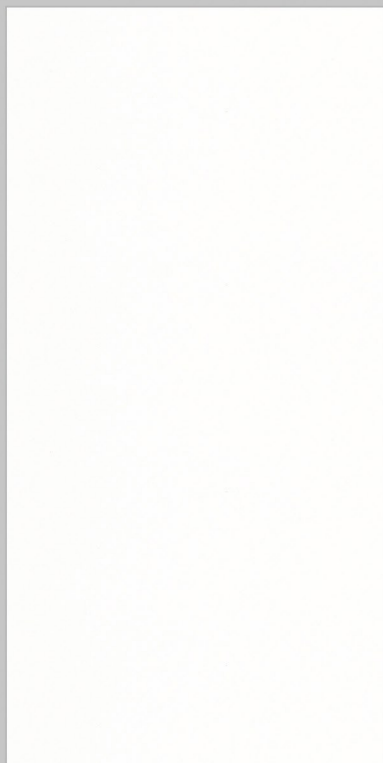




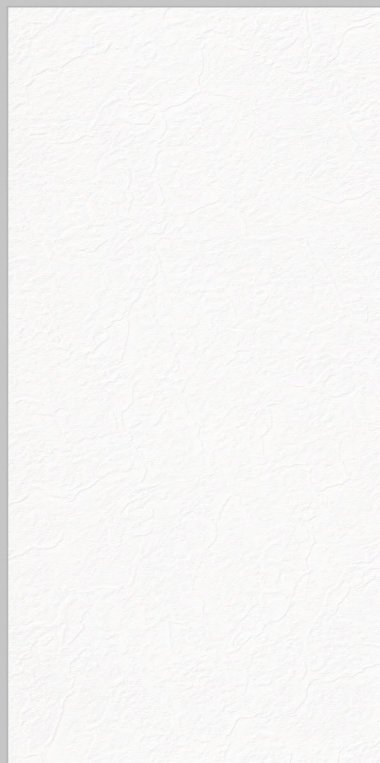




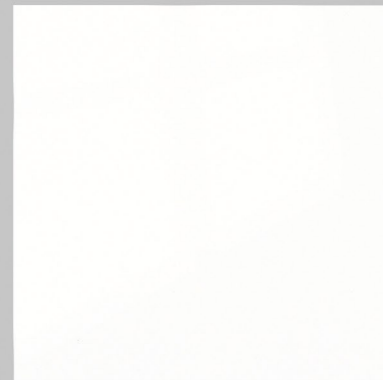
**600X1200MM**  
POLISHED



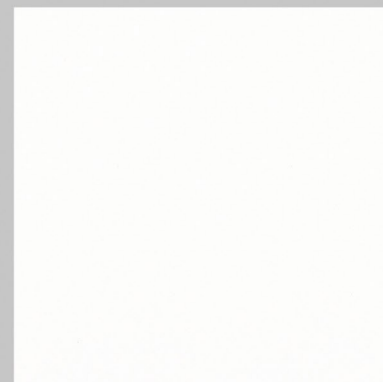
**600X1200MM**  
MATT



**600X1200MM**  
PUNCH



**600X600MM**  
POLISHED



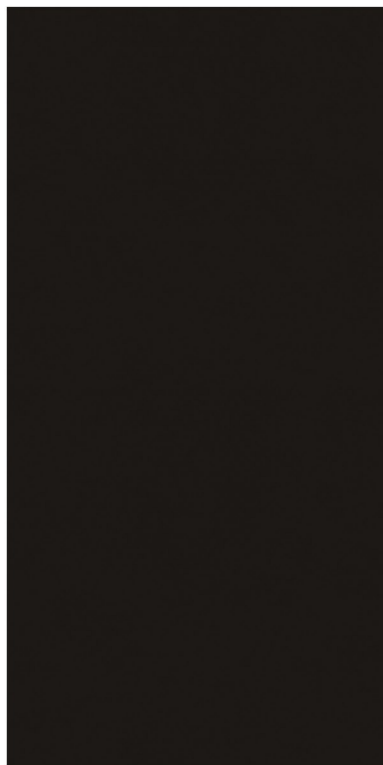
**600X600MM**  
MATT











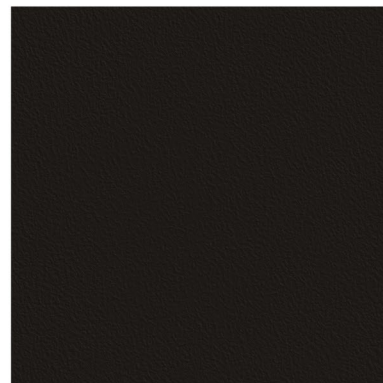
**600X1200MM**  
MATT



**600X1200MM**  
PUNCH



**600X600MM**  
POLISHED



**600X600MM**  
PUNCH

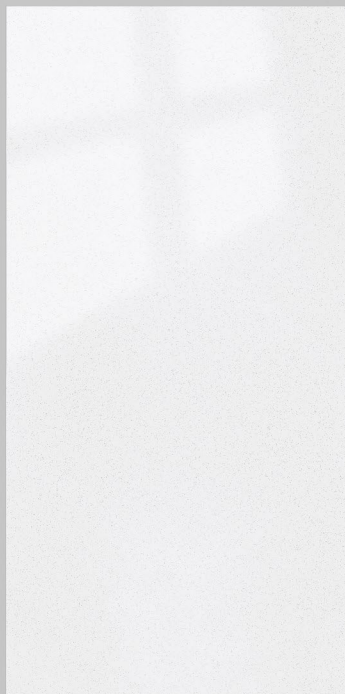








**800X1600MM**  
POLISHED



**600X1200MM**  
POLISHED











**800X1600MM**  
POLISHED

full  
body tiles



FORMAT. 1

ROYAL QUARTZ



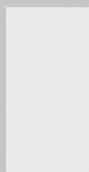






**800X1600MM**  
POLISHED

**full  
body tiles**



FORMAT. 1

SAGA WHITE









**800X1600MM**  
POLISHED



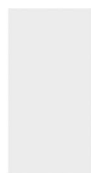








**800X1600MM**  
POLISHED



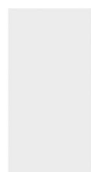








**800X1600MM**  
POLISHED



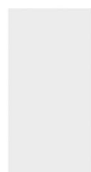








**800X1600MM**  
POLISHED





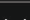
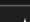

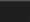


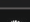
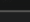
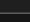
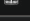
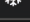


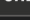










# TECHNICAL SPECIFICATIONS

CHARACTERISTICS			
DIMENSION & SURFACE QUALITY	INTERNATIONAL SPECIFICATIONS ISO 13006/EN 176 GROUP & IS 15622 : 2006	NOKEN VALUE	METHOD OF TESTING
 Deviation In Length & Width	± 0.6%	± 0.1%	ISO 10545 Pt2
 Deviation In thickness	± 5%	± 3%	ISO 10545 Pt2
 Straightness of sides	± 0.5%	± 0.1%	ISO 10545 Pt2
 Rectangularity	± 0.6%	± 0.2%	ISO 10545 Pt2
 Surface Flatness	± 0.5%	± 0.2%	ISO 10545 Pt2
 Glossiness	Gloss meter	min 90% Reflection	ISO 10545 Pt2
PHYSICAL & THERMAL PROPERTIES			
 Water Absorption	< 0.5%	< 0.05%	ISO 10545 Pt3
 Mohs Hardness	> 6	8	EN 101
 Flexural Strength (Mor)	> 35N/m²	≥ 46 N/mm²	ISO 10545 Pt4
 Surface Abrasion Resistance	< 175 mm³	< 145 mm³	ISO 10545 Pt6
 Skid Resistance	> 0.4	> 0.4	ISO 10545 Pt17
 Breaking Strength	1113 N	2800 N	ISO 10545 Pt4
 Density (g/cc)	> 2	> 2.4	DIN 51082
 Frost Resistance	Frost Proof	Frost Proof	ISO 10545 Pt12
 Thermal Shock Resistance	No Damage	No Damage	ISO 10545 Pt9
 Thermal Expansion	< 9 x 10 <sup>(-6)</sup>	< 6 X 10 <sup>(-6)</sup>	ISO 10545 Pt8
 Moisture Expansion	Nil	Nil	ISO 10545 Pt10
CHEMICAL PROPERTIES			
 Chemical Resistance	No Damage	No Damage	ISO 10545 Pt13
 Colour Resistance	No Damage	No Damage	DIN 51094
 Stain Resistance	Resistant	Resistant	ISO 10545 Pt14

\*Not applicable for glossy finishes  
\*\* These parameters are not applicable for structured punches

# PACKING DETAILS

SIZE	Pcs. /Box	Weight / Box (approx.)		Coverage Area /Box
		Polished	Matt	
800x1600mm	2 pcs	50	52	27.56 ft or 2.56mtr²
600x1200mm	2 pcs	27	28	15.50 ft² or 1.44 mtr²
600x600mm	4 pcs	27	28	15.50 ft² or 1.44 mtr²







## **Noken Vitrified Pvt. Ltd.**

Survey No. 204 P1/p3, 205 P1,  
Village, Nichi Mandal,  
Morbi-halvad Highway,  
Morbi - 363 642, (guj.), India.

**Call.**  
+91 96870 19323

**Mail.**  
[info@nokenvitrified.com](mailto:info@nokenvitrified.com)

**Web.**  
[www.nokenvitrified.in](http://www.nokenvitrified.in)